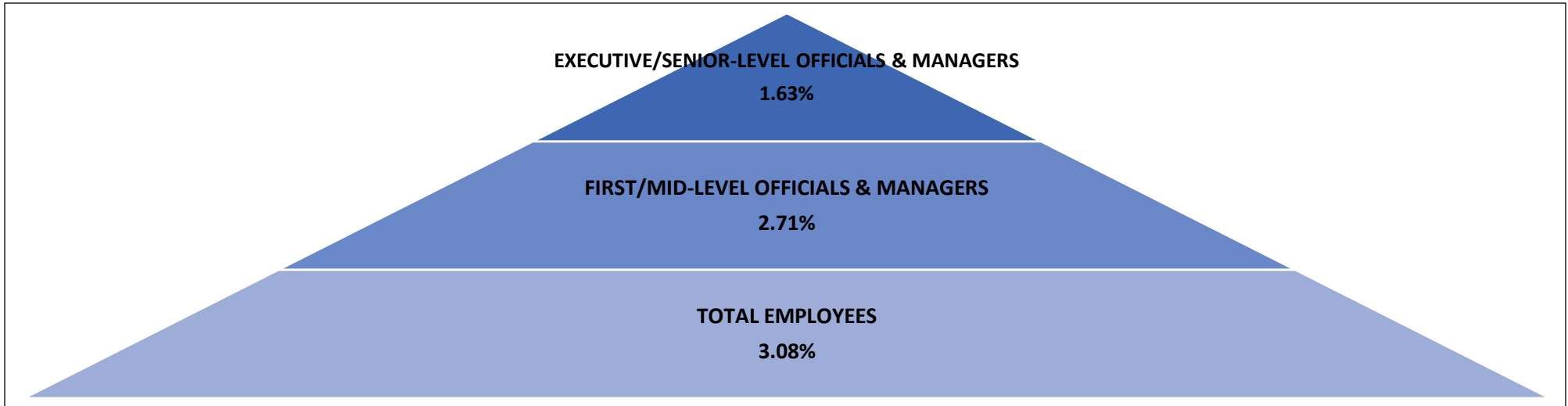


Silent Crisis Insight Pyramid: Asian American Women in National Private Industry Companies Leadership

2017* Asian American Women in National Private Industry Leadership Silent Crisis



Black women have comprised less than 2 percent of Executive/Senior-Level Officials & Managers positions in national private industry companies for eleven consecutive years.

2007-2017 ASIAN AMERICAN WOMEN IN NATIONAL PRIVATE INDUSTRY COMPANIES

	2007	2008	2009	2010	2011	2012	2013	2014	2015	2016	2017
	(%)	(%)	(%)	(%)	(%)	(%)	(%)	(%)	(%)	(%)	(%)
Total Asian American women employees	2.48	2.55	2.62	2.66	2.70	2.70	2.78	2.82	2.88	2.96	3.08
Total Asian American women First/Mid-Level Officials & Managers	1.69	1.80	1.86	1.96	2.20	2.02	2.22	2.33	2.44	2.55	2.71
Total Asian American women Executive/Senior-Level Officials & Managers	1.03	1.09	1.05	1.09	1.11	1.11	1.22	1.29	1.35	1.57	1.63

Source: U.S. Equal Employment Opportunity Commission (EEOC) 2007-2017 National Private Industry Aggregate EEO-1 data.

* 2017 EEO-1 United States National Aggregate data was the most recent U.S. Equal Employment Opportunity Commission released data at time of publication.

How to cite this product: Critical Diversity Measures Institute, Silent Crisis Insight Pyramid: Asian American Women in National Private Industry Companies (June 1, 2019).

Copyright © 2019 Critical Diversity Measures Institute LLC. All rights reserved.

Critical Diversity Measures Institute the copyright owner grant permission to using Silent Crisis Insight Pyramid: Asian American Women in National Private Industry Companies Leadership subject to the following attribution. "Reprinted with permission from the Critical Diversity Measures Institute, LLC" published on June 1, 2019.

Author: Charles H. Polk, Founder & President—Critical Diversity Measures Institute, LLC—(Updated annually or upon release of most current EEOC data)