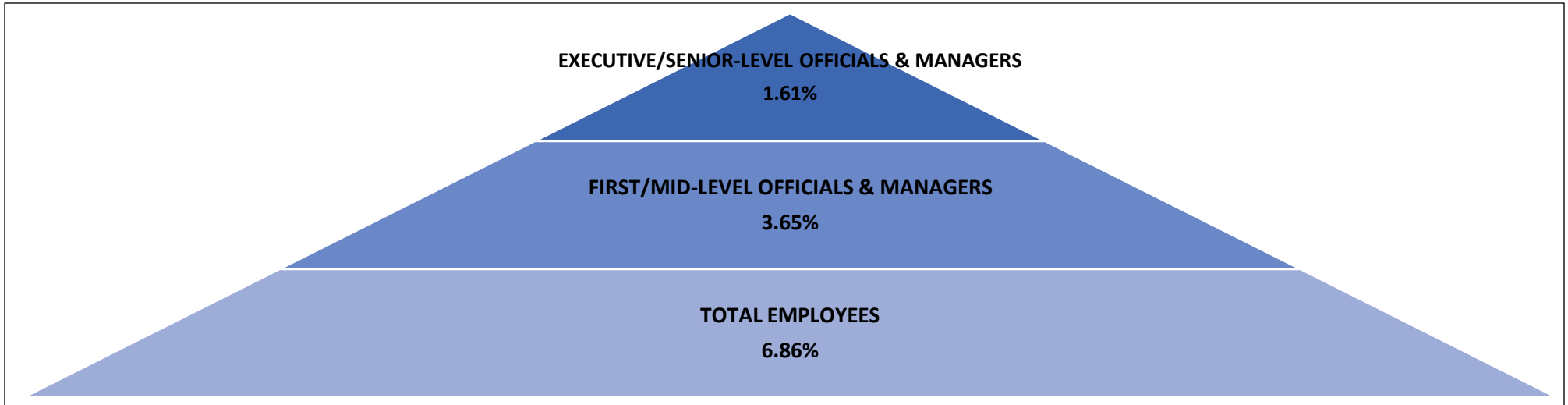


# Silent Crisis Insight Pyramid: Black Men in National Private Industry Companies Leadership

## 2017\* Black Men in National Private Industry Leadership Silent Crisis Insight



In 2017, Black men had comprised less than 2 percent of Executive/Senior-Level Officials & Managers positions in national private industry companies for eleven consecutive years.

### 2007-2017 BLACK MEN IN NATIONAL PRIVATE INDUSTRY COMPANIES

	2007	2008	2009	2010	2011	2012	2013	2014	2015	2016	2017
	(%)	(%)	(%)	(%)	(%)	(%)	(%)	(%)	(%)	(%)	(%)
<b>Total Black men employees</b>	6.36	6.29	6.09	6.09	6.13	6.13	6.37	6.54	6.68	6.76	6.86
<b>Total Black men First/Mid-Level Officials &amp; Managers</b>	3.74	3.70	3.58	3.53	3.47	3.47	3.50	3.54	3.56	3.59	3.65
<b>Total Black men Executive/Senior-Level Officials &amp; Managers</b>	1.89	1.67	1.58	1.58	1.51	1.51	1.40	1.64	1.62	1.63	1.61

Source: U.S. Equal Employment Opportunity Commission (EEOC) 2007-2017 National Private Industry Aggregate EEO-1 data.

\* 2017 EEO-1 United States National Aggregate data was the most recent U.S. Equal Employment Opportunity Commission released data at time of publication.

**How to cite this product:** Critical Diversity Measures Institute, Silent Crisis Insight Pyramid: Black Men in National Private Industry Companies Leadership. (June 1, 2019).

Copyright © 2019 Critical Diversity Measures Institute LLC. All rights reserved.

Critical Diversity Measures Institute the copyright owner grant permission to use the Silent Crisis Insight Pyramid: Black Men in National Private Industry Companies Leadership subject to the following attribution. "Reprinted with permission from the Critical Diversity Measures Institute, LLC" published on June 1, 2019.

Author: Charles H. Polk, Founder & President—Critical Diversity Measures Institute, LLC—(Updated annually or upon release of most current EEOC data)