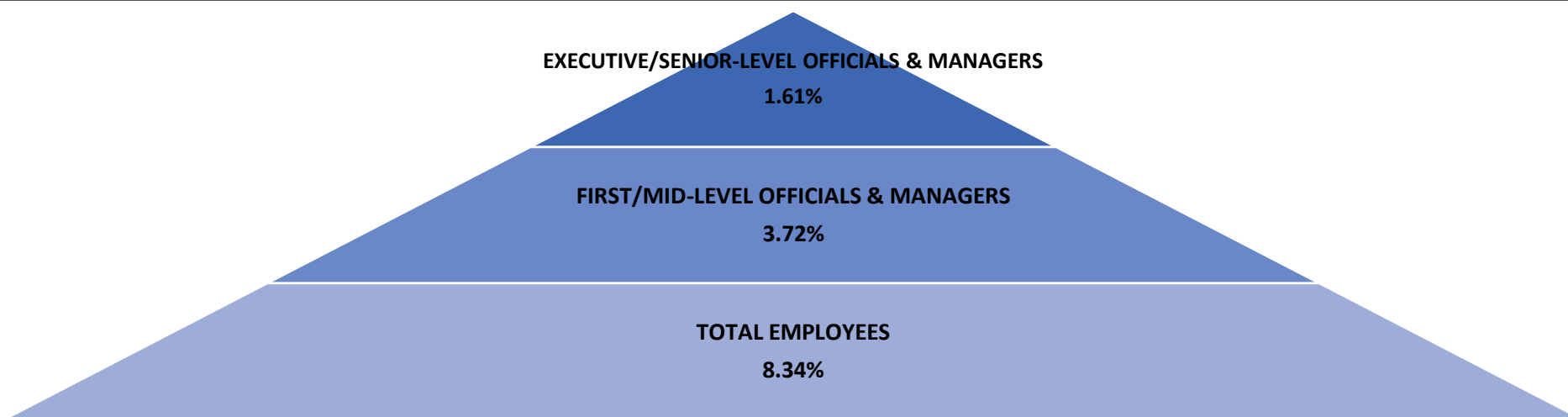


Silent Crisis Insight Pyramid Industry: Black Women in National Private Industry Companies Leadership

2017* Black Women in National Private Industry Leadership Silent Crisis Insight



2007-2017 BLACK WOMEN IN NATIONAL PRIVATE INDUSTRY COMPANIES LEADERSHIP

	2007	2008	2009	2010	2011	2012	2013	2014	2015	2016	2017
	(%)	(%)	(%)	(%)	(%)	(%)	(%)	(%)	(%)	(%)	(%)
Total Black women employment	7.74	7.69	7.67	7.56	7.55	7.55	7.75	7.94	8.12	8.26	8.34
Black women First/Mid-Level Officials & Managers	3.51	3.47	3.48	3.42	3.41	3.41	3.49	3.58	3.61	3.66	3.72
Black women Executive/Senior-Level Officials & Managers	1.68	1.72	1.46	1.48	1.40	1.40	1.40	1.49	1.56	1.56	1.61

Source: U.S. Equal Employment Opportunity Commission (EEOC) 2007-2017 National Private Industry Aggregate EEO-1 data.

* 2017 EEO-1 United States National Aggregate data was the most recent U.S. Equal Employment Opportunity Commission released data at time of publication.

How to cite this product: Critical Diversity Measures Institute, Silent Crisis Insight Pyramid: Black Women in National Private Industry Companies Leadership. (June 1, 2019).

Copyright © 2019 Critical Diversity Measures Institute LLC. All rights reserved.

Critical Diversity Measures Institute the copyright owner grant permission to using Silent Crisis Insight Pyramid: Black Women in National Private Industry Companies Leadership subject to the following attribution. "Reprinted with permission from the Critical Diversity Measures Institute, LLC" published on June 1, 2019.

Author: Charles H. Polk, Founder & President—Critical Diversity Measures Institute, LLC—(Updated annually or upon release of most current EEOC data)