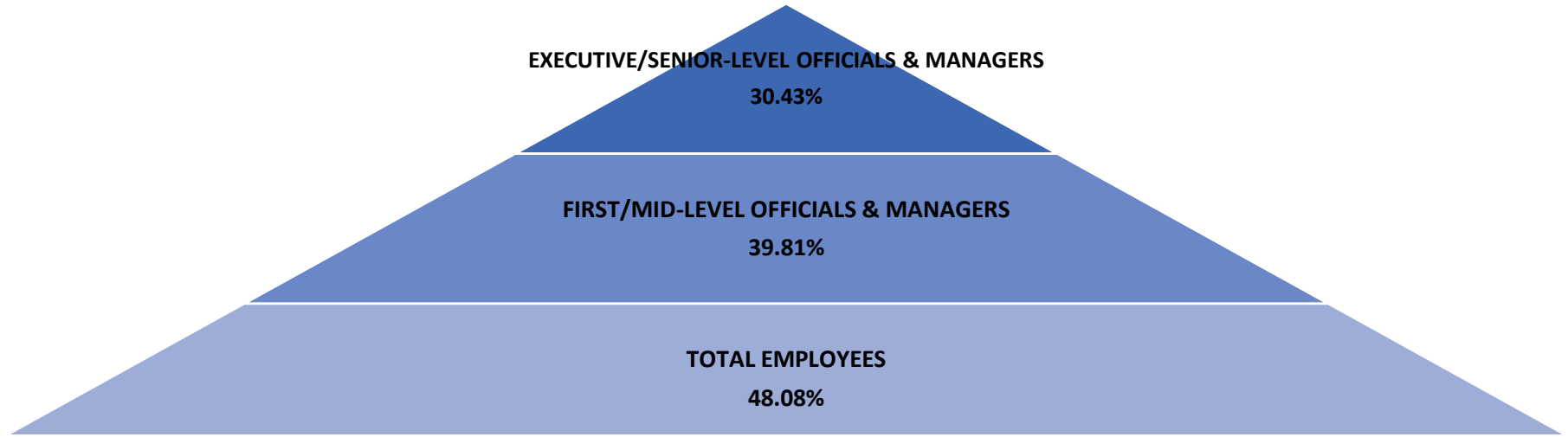


Silent Crisis Insight Pyramid: Women in National Private Industry Companies Leadership

2017* Women in National Private Industry Leadership Silent Crisis Insight



Women have comprised less than a third of Executive/Senior-Level Officials & Managers positions in national private industry companies for more than a decade—however, women comprised nearly half of national private industry company’s workers during that time.

2007-2017 WOMEN IN NATIONAL PRIVATE INDUSTRY COMPANIES LEADERSHIP

| | 2007 | 2008 | 2009 | 2010 | 2011 | 2012 | 2013 | 2014 | 2015 | 2016 | 2017 |
|--|-------|-------|-------|-------|-------|-------|-------|-------|-------|-------|-------|
| | (%) | (%) | (%) | (%) | (%) | (%) | (%) | (%) | (%) | (%) | (%) |
| Total women employees | 47.56 | 47.82 | 48.45 | 48.23 | 48.04 | 47.95 | 47.82 | 47.75 | 47.85 | 48.06 | 48.08 |
| Total women First/Mid-Level Officials & Managers | 37.38 | 37.54 | 38.05 | 38.20 | 38.47 | 38.59 | 38.76 | 38.96 | 39.24 | 39.62 | 39.81 |
| Total women Executive/Senior-Level Officials & Managers | 28.60 | 28.96 | 28.31 | 28.15 | 28.73 | 29.00 | 29.16 | 28.81 | 29.73 | 29.79 | 30.43 |

Source: U.S. Equal Employment Opportunity Commission (EEOC) 2007-2017 National Private Industry Aggregate EEO-1 data.

* 2017 EEO-1 United States National Aggregate data was the most recent U.S. Equal Employment Opportunity Commission released data at time of publication.

How to cite this product: Critical Diversity Measures Institute, Silent Crisis Insight Pyramid: Women in National Private Industry Companies Leadership. (June 1, 2019).

Copyright © 2019 Critical Diversity Measures Institute LLC. All rights reserved.

Critical Diversity Measures Institute the copyright owner grant permission to use the Silent Crisis Insight Pyramid: Women in National Private Industry Companies Leadership subject to the following attribution. “Reprinted with permission from the Critical Diversity Measures Institute, LLC” published on June 1, 2019.

Author: Charles H. Polk, Founder & President—Critical Diversity Measures Institute, LLC—(Updated annually or upon release of most current EEOC data)